



Welcome to Sharp

Explore a world of connected technologies

PRODUCT RANGE

www.docuflow.co.uk/services

SHARP
Be Original.



Visual Display Solutions

Innovative interactive meeting room screens,
flexible digital signage and professional display

Sharp manufactures some of the world's most advanced flat screen display technology - ideal for mission-critical control rooms, retail hubs, TV studios, design studios and wherever high fidelity screens are essential.

From commercial displays for digital signage, through to interactive displays for a true pen-on-paper experience, Sharp has a visual solution for every need.

Our professional display solutions and video walls are ideal for any environment where clear communication of complex information is essential. Large format display will get your message across in crowded and busy locations such as retail centres and transport hubs. And for smaller spaces, we have a range of best-in-class visual business solutions with sizes starting from 32".



Interactive Solutions - BIG PAD

Sharp's interactive display solutions allow for effortless collaboration, communication and sharing. Their easy-to-use and highly responsive touch performance ensure that users are confident and can focus on their primary task. The beautifully developed application tools are brilliant for any environment and ensure seamless integration with existing software and hardware.

Sharp Display Connect enables multifaceted wireless communication and collaboration with all mobile smart devices as well as remote locations. Whether in the boardroom or the office, Sharp changes the way you collaborate and communicate.

Professional Displays & Digital Signage

Sharp's range of professional display solutions bring fine screen resolution and exceptional colour fidelity to any environment where effective visual communication is essential. Our professional products benefit from high resolution technology – including 4K and more recently 8K – and have specific capabilities including 24/7 operation and landscape, portrait and horizontal installation options, to ensure optimum effect in all conditions and locations.

Our digital displays let you take advantage of smart connectivity and cloud-based dynamic content management*, making it easy to select and communicate the right message to the right audience at the right time – ideal for busy retail settings, leisure and entertainment centres, meeting rooms, lobbies, transport hubs, conference centres and much more.

Video Walls

Sometimes, even the largest single LCD display isn't enough to do the job. There are times when only an entire video wall will do. Sharp professional displays can be mounted in portrait and landscape configuration to create high impact multi-screen video walls. Ultra-slim bezels reduce the distance between screens to create a truly impactful, distraction-free wall display, in almost any size and format.

**Depending on the model and the application.*

Visual Display Solutions

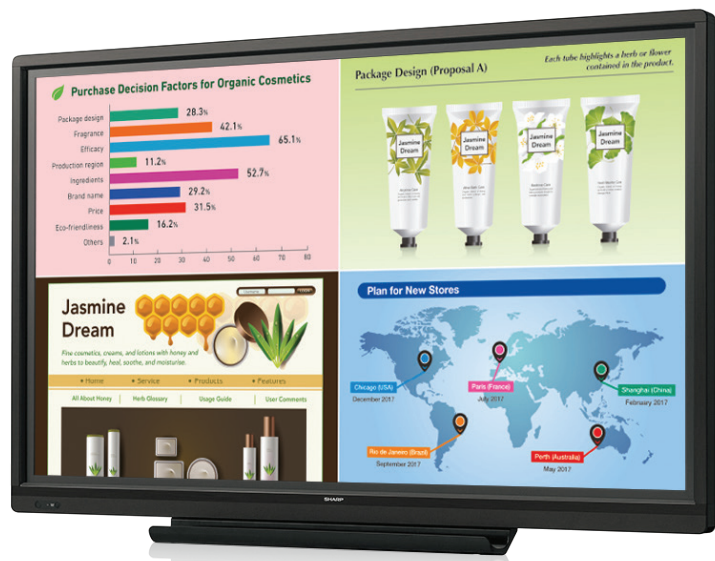
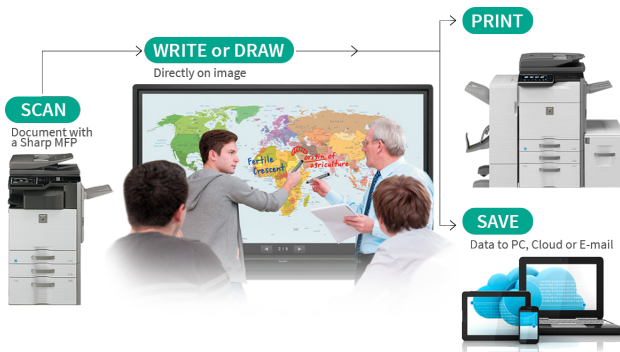
BIG PAD Interactive Flat Panel Displays

Features and Benefits



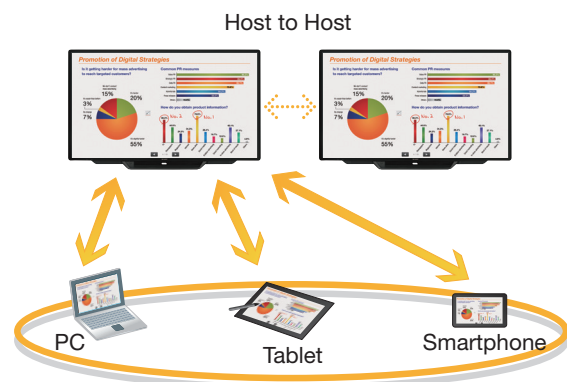
Sharp Pen Software

Easily launch and display the Sharp Pen Software user interface – smartly arranged icons that provide easy access to pen settings and functions. Menus can be browsed easily and are displayed in a floating format that allows them to be moved to anywhere on the screen. In addition to handwriting and shape recognition, in overlay mode you can write on screen annotations directly onto photos, videos, PDFs and Microsoft Office documents.



Sharp Display Connect

Supporting the integration of Bring Your Own Devices (BYOD). Up to 50 participants can connect their mobile devices with a BIG PAD. Sharp Display Connect enables smart phones, tablets and PCs to exchange data, contribute ideas, control the monitor or annotate on the on screen content.



MFP Connectivity

Documents and images scanned from a colour-scan-capable Sharp MFP can be imported directly to the pen software for display on the BIG PAD. For added convenience, image data shown on-screen, including notations, can be saved to a PC or sent directly to an MFP for printout.

MINI OPS Slots and Modules

The Mini OPS format takes advantage of the latest, more energy efficient chip sets coming from Intel. The Sharp modules can add a host of features for both interactive touch and non-touch professional displays, from making the display more intelligent, to adding more connectivity options so that you can change or add functionality as you require.

When it comes to touch screen monitors and interactive screen technology, there is no 'one size fits all' solution. That's why we have developed a range of touch screens in different sizes and formats, combining various technologies, specifically suited to particular environments and applications.

Visual Display Solutions - BIG PAD:Range



PN-80TC3A

- For demanding office, education and mission critical environments
- Smooth, highly responsive P-CAP 10-point touch with up to 4 users
- Seamless flat bezel for optimised multi-board configurations
- Sharp's unique UV2A LCD technology for high visual clarity
- Sharp Pen Software
- Sharp Display Connect for BYOD
- Sharp Touch Viewer Software for organising collaboration data

PN-80TH5 / 70TH5

- 70" & 80" Premium Interactive Display 4K UHD resolution 3840x2160 pixels with UV2A LCD
- 30-Point Projected Capacitive Touch technology for the best "Pen-on-Paper" user experience
- True "4K Reading and Writing"
- New Pen Stylus with 2mm tip

PN-80SC5 / 70SC5 / 60SC5

- For education and office meeting rooms
- Fast and responsive Infrared 10 point Touch - up to 4 users
- Amazing "Optical Bonding" for brilliant eye-catching image content
- Freeze-Frame and Blackout Buttons
- Sharp Pen Software
- Two built-in stereo loudspeakers
- Sharp Display Connect for latest BYOD wireless inter-connectivity

PN-70TB3 / 60TB3

- For office and meeting rooms
- Fast and Responsive Infrared (IR) 10 point Touch - up to 4 users
- Sharp Display Connect for BYOD
- Sharp's unique UV2A LCD technology for high visual clarity
- Sharp Pen Software
- Quick start up and ergonomic anti-glare and scratch resistant screen
- Two built-in stereo loudspeakers



PN-70TW3A / 60TW3A

- For office and meeting rooms
- Fast and Responsive Infrared (IR) 10 point Touch - up to 4 users
- Sharp Pen Software
- Sharp Display Connect for BYOD
- Pen Digitizer Windows Driver
- Sharp Touch Viewing Software for organising collaboration data
- DICOM Emulation mode for accurate radiological review
- MirrorOp software included to facilitate interactive and engaging meetings

PN-65SC1

- For education and office meeting rooms.
- Fast and Responsive Infrared (IR) 10 point Touch - up to 4 users
- Two built-in stereo loudspeakers
- Mini OPS Slot for flexible enhancement
- Sharp Pen Software
- Sharp Display Connect for latest BYOD wireless inter-connectivity

PN-50TC1 / 40TC1

- For Huddle Office Meeting Spaces and Interactive Retail Signage
- Fast and Responsive PCAP Capacitive 10 point Touch - up to 4 users
- Mini OPS Slot for flexible enhancement
- Sharp Pen Software
- Sharp Touch Viewing Software for organising collaboration data
- Sharp Display Connect for latest BYOD wireless collaboration

Multi-board Software

Sharp's Advanced Multi-Board driver solution allows an existing standard Multi-Board setup of either two or three BIG PAD's to take full advantage of multi-user, multi-touch software applications. With a fully interactive display wall that's up to 5.3 metres long, the Advanced Multi-Board driver option offers an easy to setup and easy to use interactive performance that's the only one of its kind available today.



* PN-80TC3A and PN-80TH5/70TH5 models only

Visual Display Solutions

Interactive Touch Screen Table - Early Years Edition



An interactive and mobile activity board ideal for all Early Years Foundation Stage education and entertainment needs. The robust and durable table uses the latest 10 point touch technology, allowing a number of children to draw and mark directly onto the screen using either their hand or finger.

Self contained mobile solution

Powered by a built-in battery pack means that you simply charge overnight and unplug to use throughout the day, eliminating trip hazards and maximising mobility. The table can be easily tilted and locked into position, allowing children to interact together around the table on learning apps, games or puzzles.

The table can be securely connected directly to the internet via the Wi-Fi feature or linked to another wireless or Bluetooth device, such as a printer to share children's activities and creativity with friends and family.

Unlock learning potential

Pre-installed EYFS content and sensory apps are suitable for individual or group activities, encouraging children to socialise, learn, share and communicate.

Interactive Touch Screen Table - Meet UP Edition

The Interactive Touchscreen Table:: Meet UP is a mobile interactive device, ideal for team work, meetings and demonstrations.

Supporting and encouraging team work

The Meet UP is a great way to make meetings more engaging and productive, giving all colleagues a chance to participate and cooperate. Rather than being a passive audience to one person's presentation, the whole team are able to take on an active role. The Meet UP is an intuitive touchscreen device that can be used by multiple users at once.

The table features adjustable legs, meaning that it can be raised or lowered, depending on the needs of the users. Designed on wheels so it can be easily manoeuvred from room to room, the table also has locking brakes for added safety and security.

The screen can be easily tilted and locked into position, allowing users to interact together. Alternatively, the table can be tilted further through to 68 degrees for users to view presentations and videos.

Stay connected

The Meet UP can be securely connected directly to the internet via Wi-Fi, or linked to another wireless or Bluetooth device. This useful feature allows for the device to be connected to a printer - making the Meet UP an invaluable tool for any office environment.



*The Interactive Touch Screen Table: Early Years edition is not a Sharp product. Sharp Business Systems UK (SBS UK) is the exclusive distributor of the product, but not the producer. The product has been designed and manufactured by a third party which has provided SBS UK with detailed specifications. The product specifications can be made available on request.



Visual Display Solutions

Professional Display

So what is it that makes the difference between 'ordinary' and professional display solutions? Resolution is part of the equation, which is why we use 4K resolution on some models and have just introduced a stunning 8K model to our range. Adding the clarity you need to communicate fine detail to a distant audience is just one reason why professionals insist on using Sharp digital displays.

The world of visual solutions is changing and Sharp is leading the way by being bold in its research and development, looking to bring the technologies of tomorrow to market ahead of anyone else.



8K – the high standard in image precision

8K has important applications in industries that rely on detailed and colour-accurate images, including medicine, design and engineering. 8K displays are also able to replace multiple lower-resolution monitors in workplaces that handle high volumes of information, for example, trading floors, transport hubs and control centres.

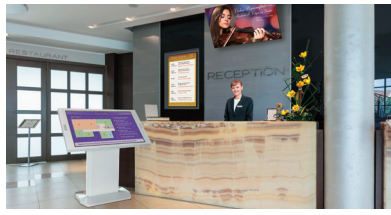
Our new model **LV-70X500E**, offers outstanding image quality and colour accuracy thanks to a wide gamut and 10-bit extended colour range. The HDR (High Dynamic Range) expands the range of both contrast and colour significantly, brightening images so that they appear to have more depth.

The high-quality 8K resolution display has 33 million pixels (7680 x 4320 pixels), four times more than 4K Ultra HD and sixteen times the resolution of Full HD. The monitor reproduces images at a higher resolution than the human eye can capture, allowing you to zoom in to details within an image to an extent not previously possible.

8K
7680 × 4320 Pixels

HDR
HIGH DYNAMIC RANGE

Visual Display Solutions - Professional Display Range



PN-R903A / R903

- Suitable for a variety of indoor locations such as retail locations, educational institutes, conference rooms and public spaces.
- 90" display for professional 24/7 signage
- 1920 x 1080 pixels
- Built-in Stereo Speakers 10 + 10W and UV2A LCD technology
- LED, full array
- 24/7 Operation
- Energy Efficient
- Local area dimming technology
- Landscape & portrait installation support.

PN-R706 / R606 / R556 / R496 / R426

- Suitable for heavy duty and demanding environments
- 42", 49", 55", 60" & 70" display for professional 24/7 signage
- 1920 x 1080 pixels
- Flexible installation with Mini-OPS extension slot
- LED, edge Lit
- Slim Bezel Design with Speakers
- Portrait, Landscape, Face-Up and face-down installation support
- IPS Display Technology

PN-E803 / E703 / E603

- For high impact 24/7 retail and office images
- 60", 70" & 80" display
- 1920 x 1080 pixels
- Attractive slim bezel cabinet with stereo speakers 10 + 10W
- Energy efficient LED backlight with class leading UV2A LCD technology
- 24/7 Operation with built-in temperate regulation
- Latest DisplayPort, HDMI and DVI connectivity
- Full LAN and RS232 remote controllability



PN-A601

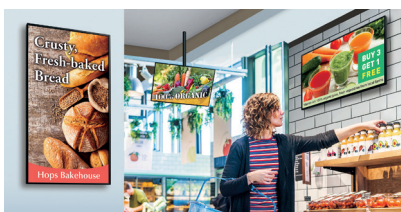
- For for 24/7 high-brightness retail signage
- 60" display 1920 x 1080 pixels
- Local Dimming
- Bezel only 19.8 mm
- 24/7 50,000 hours life time max.
- 5 x 5 Multi-screen Capability
- Module Slot System

PN-Y556 / Y496 / Y456 / Y326

- Suitable for heavy duty and demanding environments
- 32", 43", 49" & 55" display for professional 24/7 signage
- 1920 x 1080 pixels
- Simple and Easy Signage with Speakers 5 + 5W and USB Media Player
- LED, edge lit
- Slim Bezel Design
- Portrait, Landscape, Face-Up and Face-Down installation support

PN-Q901E / Q801E / Q701K / Q601K

- Suitable for retail signage, transport signage, way-finding, hospitality and reception areas.
- 60", 70", 80" & 90" diagonal screen size
- 1920 x 1080 resolution in dots
- UV2A technology
- LED, edge lit
- 16/7 operation
- Speakers 10 + 10W and Integrated USB Media Player



PN-HW861 / 751 / 651 / 551 / 501 / 431

- Suitable for a variety of indoor locations such as retail locations, educational institutes, conference rooms, meeting rooms and public spaces.
- 43", 50", 55", 65", 75" and 86" display for professional 16/7 signage
- 4K / UHD 3840 x 2160 pixels
- Simple and Easy Signage with Speakers 10 + 10W and USB Media Player
- LED, edge lit
- Slim Bezel Design
- Portrait & Landscape, installation support

PN-M501/M401

- 40" / 50" displays, for professional 24/7 signage
- 1920 x 1080 pixels with 450cd/m²
- Portrait, landscape, face-up and face-down installation support
- Flexible, stand-alone operation with embedded Android SoC – Sharp e-Signage S Player installed
- Performance upgrade with Mini-OPS extension slot
- Slim bezel design with speakers 7W + 7W

PN-B501/B401

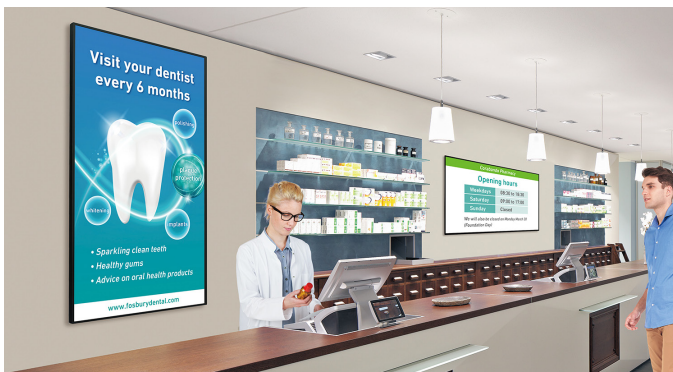
- 40" / 50" displays, for professional 16/7 signage
- 1920 x 1080 pixels with 300cd/m²
- Portrait, landscape, face-up and face-down installation support
- Flexible, stand-alone operation with embedded Android SoC – Sharp e-Signage S Player installed
- Performance upgrade with Mini-OPS extension slot
- Slim bezel design with speakers 7W + 7W

Visual Display Solutions - Professional Display

Video Walls

Almost any number of PN-V series monitors may be joined together to create high impact multi-screen video walls. They are the perfect solution to show amazing detail over a large display area, without compromise on fine image detail or image size. High luminance means that your video wall will perform well in even the most brightly lit locations and thanks to our high contrast technology, your images will be clearly visible from a surprisingly long distance.

Associated Software



Digital Signage Manager

Digital Signage Manager is a highly versatile, easy-to-use, management software solution that provides total support for creating, scheduling, distributing, displaying and monitoring all types of digital signage deployments.

Easy to use system

- Easily add and arrange content through drag-and-drop operation
- Create and edit schedules

Benefits of a digital signage solution

- Offers can be targeted for your audience.
- Content can be changed quickly dependent on current news, events and promotions.
- Content can be scheduled, ensuring the right information is shown at the right time to maximise opportunities.



ABOUT DOCUFLOW

Docuflow is a UK document technologies business of print, mail, document workflows & digital transformation. We provide best of breed services and solutions from a selection of software, hardware and business partners enabling organisations to manage their company's business critical documents quickly, efficiently and cost effectively.

Docuflow's customers reflect the diversity of the UK economy in terms of size, sector and ownership structure.

Docuflow has a wealth of experience of delivering document workflow solutions providing a best of breed portfolio of products and solutions which can be On-site or Off-site that enables our clients to implement world class technologies, processes and services.

Our services and solutions are supported by highly trained sales and service teams, to provide true end-to-end solutions.
